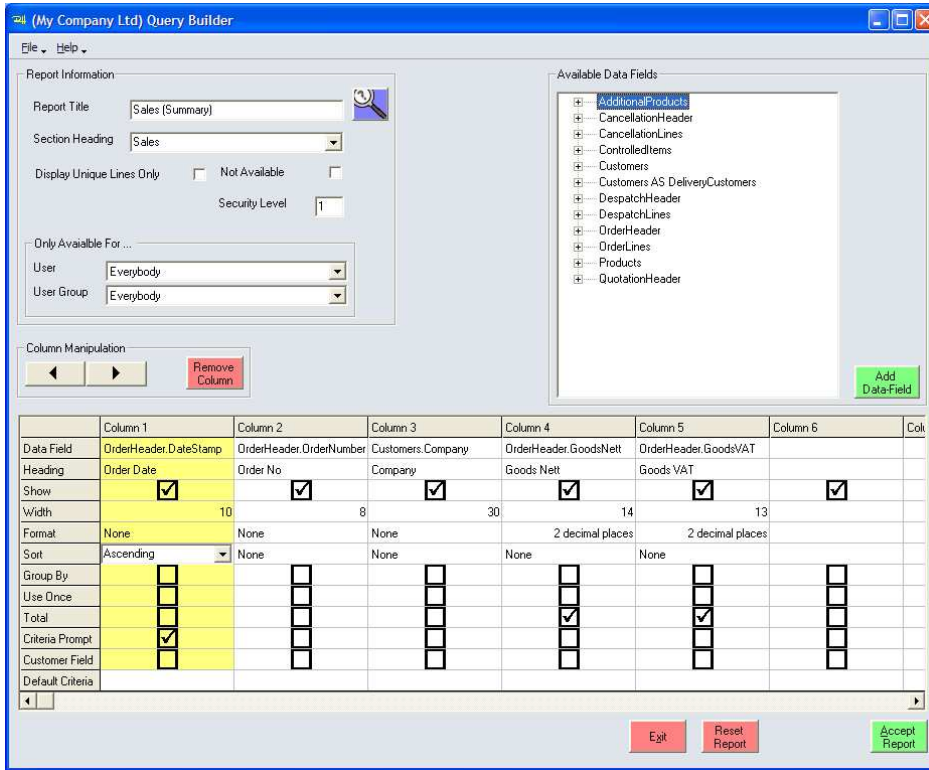


### Reporting Data Sheet

A crucial part of running a business is to be able to quickly and easily access information against all areas of the operation. Delstree Control provides an easy to use Reporting Tool that has a standard suite of reports covering all aspects of the business and also facilitates the use of ad-hoc reporting.



New reports can be created based on existing reports or designed from scratch.

Drag & Drop fields allow a report to be built up quickly and easily. The available data fields use meaningful names to ensure unambiguous reports.

Report columns can be added, moved and deleted as necessary.

Single or multiple columns can be used as report criteria.

Access to reports is controls by user login security level.

Once logged in reports are viewed by clicking on the relevant report from the list provided.

Report selection criteria is optional and can be used where specific report data sets are required.

Reports can be viewed using Microsoft Excel or simply viewed or printed via the standard Information Control screen.

All data held on the Delstree Control system can be viewed using industry standard reporting tools where a person has the correct ODBC facilities setup and defined on their PC.

